

# Northern Continental Divide Ecosystem

- Studied since 2004
- 1975: 400 bears?
- 2004: Population estimate 765 (715-831)  
*DNA mark-recapture study*
- 2019: Population estimate 1069 (906-1242)  
*Stochastic modeling (2.3% growth rate)*
- Population has met goals in Recovery Plan

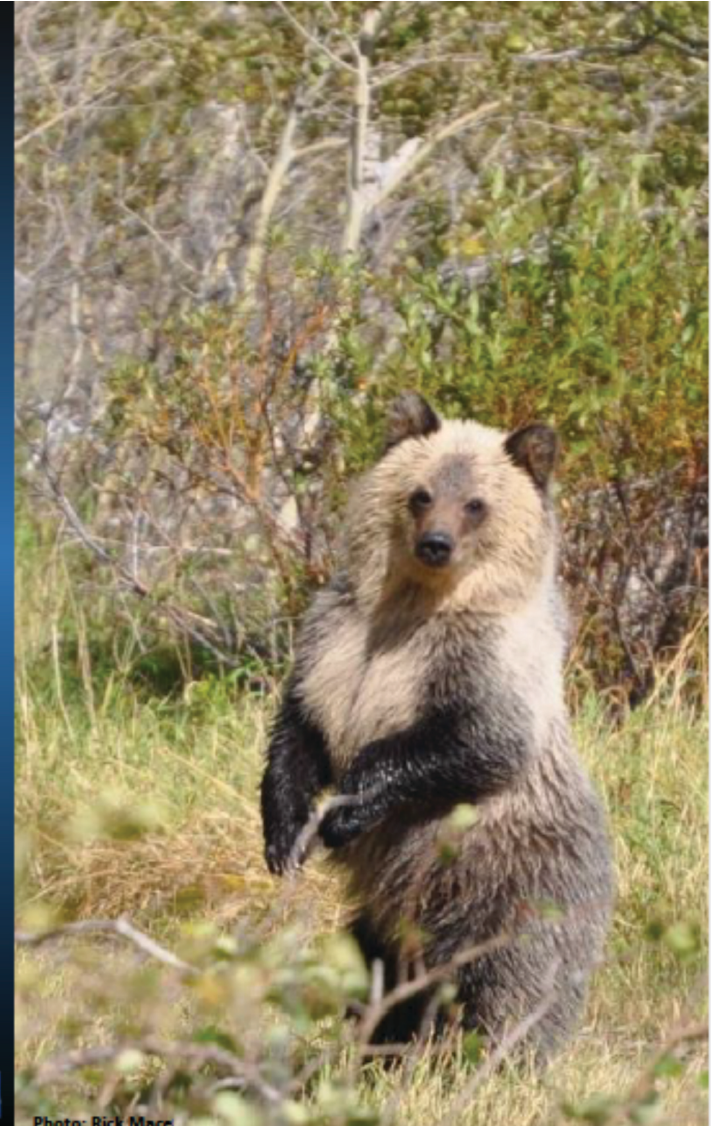


Photo: Rick Mace